

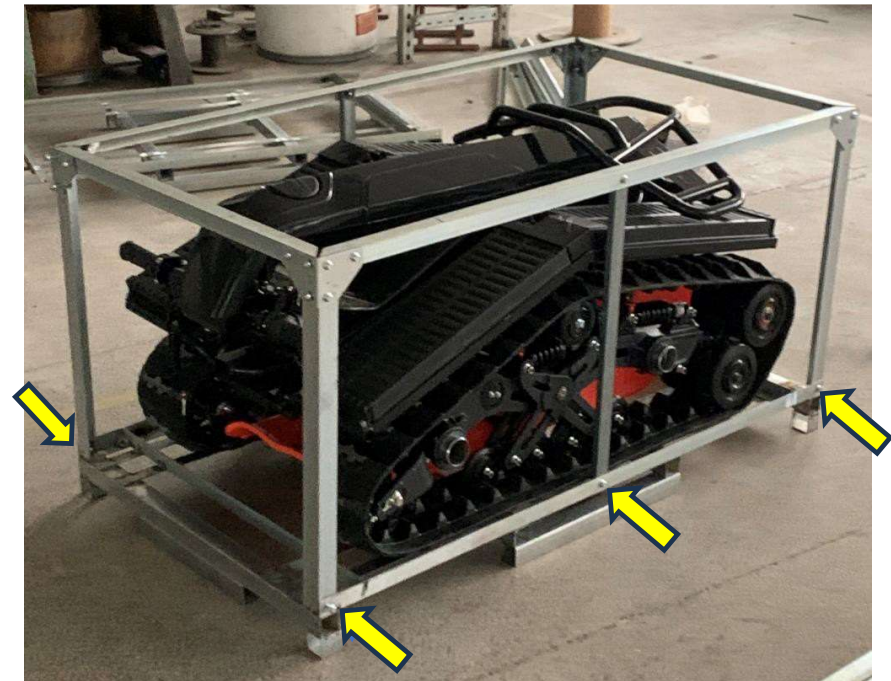
2023 Electric DTV Unboxing & Setup



Unpacking Your DTV Shredder

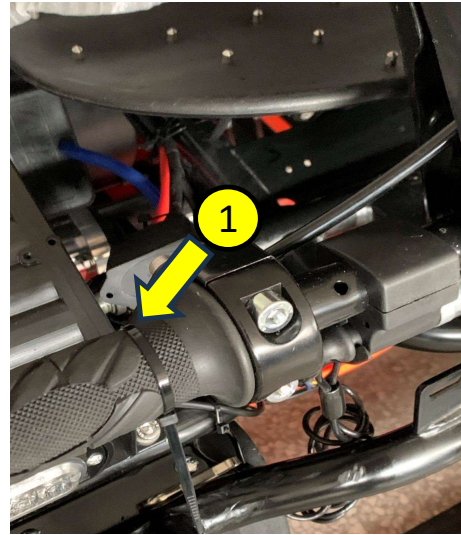
Recommend Two People

- 1) Remove the Unit and Cradle from Shipping Box
- 2) Inspect Unit for any Damage
- 3) If damage is noticed please contact DTV at support@dtvmotorcorp.com
- 4) Remove straps used to hold the unit to the cradle
- 5) Remove the (6) M6 screws with a 8mm socket
- 6) Carefully remove the top of the cradle

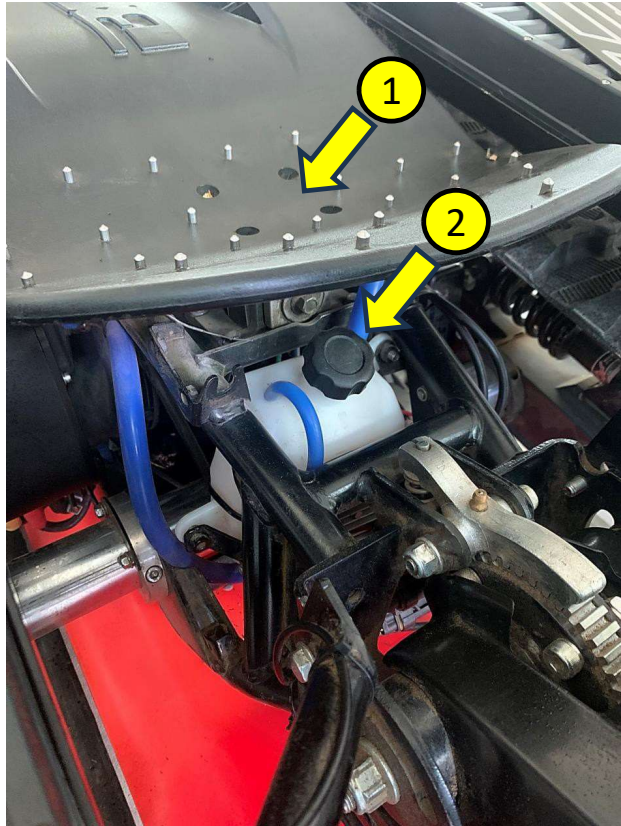


Setting the Handlebar Upright

- 1) Locate the left handle bar with the Zip-Tied levers
- 2) Remove the Zip-Ties, releasing the handlebar levers
- 3) Lift the handlebar assembly to the upright position.
- 4) Ensure break lever is not compressed.
- 5) Firmly grasp the brush bar and remove the DTV from the cradle.



Adding Coolant to Cooling system



Steps to fill coolant reservoir:

- 1) Remove top steering board to gain easier access to the reservoir (8 screws).
- 2) Remove black cap for reservoir.
- 3) Use pre-mixed general purpose automotive coolant for use with aluminum parts (As Shown).
- 4) Using a funnel add approximately 0.5L of coolant slowly to the reservoir. The pump will circulate the fluid once the unit has power.
- 5) Once the unit has power check the reservoir again.
- 6) Fill the reservoir to 1" below the spout.
- 7) Reattach the reservoir cap.
- 8) Reattach the steering board.



General Purpose Coolant for Aluminum Parts



Battery Charging

The DTV can be charged in two ways:

- 1) The first way is to charge the vehicle is by charging the battery packs individually. This can be done by plugging directly into the battery pack plug. **This is the recommended method for first time charging using the standard 5A charger.**
- 2) The second way is to charge all four packs together by plugging directly into the rear vehicle charge port.

IMPORTANT: Charging Process

- Let battery cool down to ambient temperature before charging.
- Put batteries in an isolated area, away from other flammable materials.
- Always have fire extinguisher for emergency use.



1



2

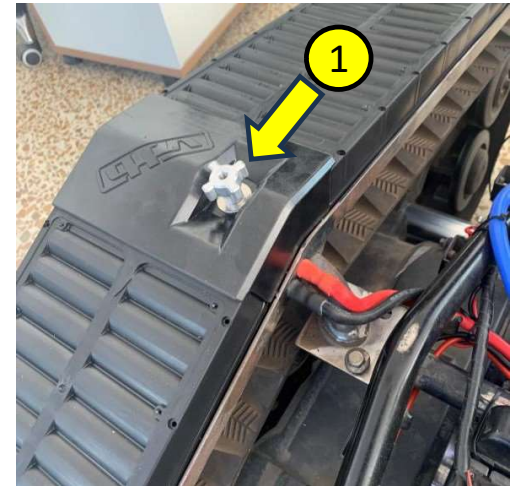


Battery Installation

The Batteries should be placed as shown:

- 1) Unscrew and remove the center knob and cover exposing the battery terminals.
- 2) Charge each battery individually using the provided 5A charger before first time use. (See Battery Charging Pages for more information)
- 3) Once charged, plug each male terminal of the battery into the female terminal for the unit.
- 4) Try to pull the terminals apart to ensure they are securely connected to each other.
- 5) Reattach the center knob and cover.

Each battery pack should look like this:



Battery Installation Continued

Turning on the Vehicle and Checking the Battery

- 1) Press the **ON/OFF** button at the top of the handle to turn on the vehicle.
- 2) If the vehicle has power, the battery gauge will turn on with a green light.
- 3) If the light didn't turn on, it means the battery is in "SLEEP MODE" and will require a five second charge cycle to "WAKE UP".
- 4) **IMPORTANT:** It's better for the batteries to be charged separately at first and to plug into the vehicle one-by-one to check the battery voltage for first time use. This will ensure the batteries voltage is equalized **BEFORE** plugging ALL four of the batteries together.



Battery Charging Continued

There are two types of chargers for the DTV:

- 1) Low power 5A charger
- 2) High power 30A charger

The battery will charge within the following times:

Rear vehicle charge port

5A = 10 **hours** charging time

30A = 2.5 **hours** charging time

Individual pack charging

5A = 2.5 **hours** charging time (one pack per charger) (x4)

30A = 1.5 **hours** charging time (two packs per charger) (x2)

5A Charger



30A Charger



- The low power charger has one charge output

- The High power charger has four charge outputs



Important Battery Information

IMPORTANT: The batteries are designed to enter into sleep mode after 48 hours of non use. If the batteries don't get used within one month or more, it is very important to periodically charge them to prevent battery damage. If the batteries get to a low voltage state they will be **UNABLE TO BE CHARGED** and will need to be safely disposed of and replaced.

IMPORTANT: It's better for the batteries to be charged separately for the first time, after which they can be plugged into the vehicle one-by-one to check the battery voltage separately. This will ensure the battery voltage is equalized BEFORE plugging ALL four of the batteries together.

Note: The battery configuration is 12S lithium battery and has the following characteristics:

The nominal voltage: $3.6 \times 12 = 43.2$ Volts.

The MAX voltage: $4.2v \times 12 = 50.4$ Volts

The MAX current: **100A / Pack**

The MAX charge current: **18A / Pack**



Important Safety Information:

The E-DTV is an electric vehicle which contains significant amounts of lithium batteries and can be dangerous, even lethal if used incorrectly. The dangers include Electrical shock, lithium explosions and fires due the volatile nature of Lithium batteries. Although the E-DTV battery is equipped with a sophisticated battery management system, the following precautions should be taken very seriously and to be used alongside all other Lithium battery precautionary measures.

- 1) The battery packs **HAVE NOT** been verified as waterproof. Exposure to water should be limited as much as possible. Light washing with low pressure rinsing can be used while keeping the discharge plug free of submersion or exposure. This included using the DTV in heavy rain as this can cause water to enter the pack enclosure.
- 2) The batteries **SHOULD NOT** be left in extreme cold or heat. The temperature should be between 5°C – 40°C and long-term storage at 20°C. Storing battery at temperatures greater than 70°C for extended periods of time (more than 2 hours) may cause damage to battery and possible fire.
- 3) The battery packs **SHOULD NOT** be dropped or crushed in any way. If damage is suspected, they should be safely removed and disposed of immediately.
- 4) **DAILY ROUTINE** inspections of the packs should be performed. This included the casing, the wires from the packs as well as those the battery packs attaches to. If any damage is seen, all operation of the vehicle or use of the packs needs to be **SUSPENDED** immediately.
- 5) **DO NOT** leave the packs in direct sunlight for extended durations as this can damage the wires and cause the casing to weaken.
- 6) Only charge the pack with the designated DTV charger as this can be a significant safety risk. Let batteries cool down to ambient temperature before charging. Put batteries in an isolated area - away from other flammable materials. Always have fire extinguisher for emergency use.



E-DTV FIRST TIME RIDING

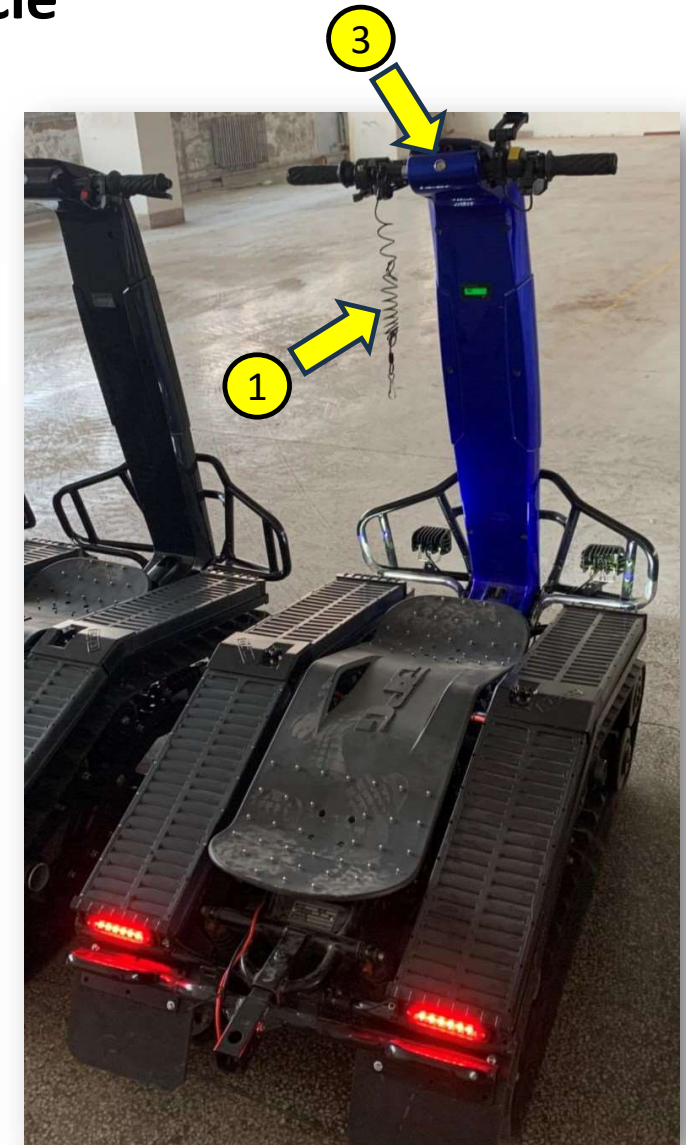
V1.1



Step 1: Turning on the Vehicle

Turning on the vehicle:

1. Ensure safety lanyard is installed
2. Clip the lanyard to a point on the rider
3. Compress parking brake
4. Press ON/OFF button to turn ON Vehicle
5. Look for green light on battery gauge and battery level is sufficient



Step 2: Engaging the Throttle

Using the Throttle and Reverse:

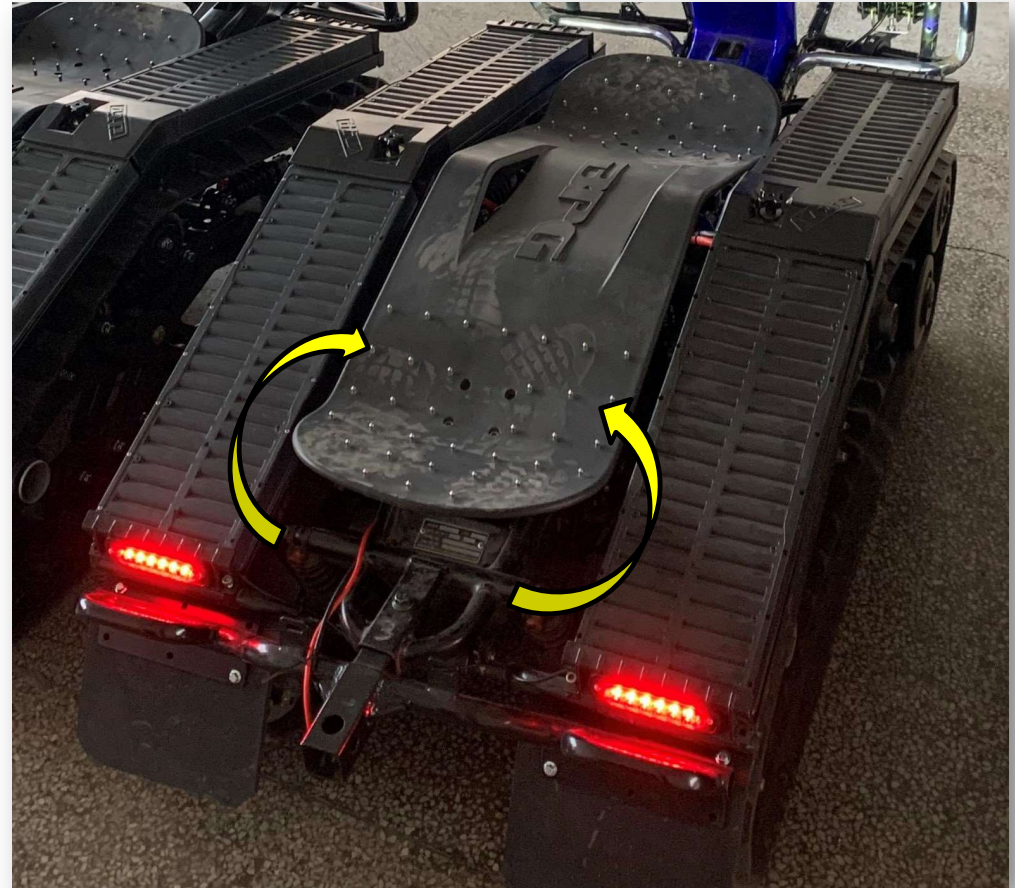
1. The Red Switch controls the forward and reverse gears. When the "I" position is engaged you will move forwards, and engaging the "O" will put the unit in reverse.
2. The Black Switch controls the lights on the Unit.
3. The lever under the handle bar is the throttle control. Lightly press this to slowly have the vehicle move.
4. Slowly get used to the Shredder and it's steering before engaging more throttle.



Step 3: Steering the Vehicle

The E DTV vehicle has 3 steering situations

- 1) **Not moving + full board tilt + throttle lever partially pressed.** This will result in the vehicle trying to turn on the spot by having one track go forward and the other going in reverse.
- 2) **Moving + board tilt + throttle partially pressed.** This will cause the inner track to slow down and the outer track to speed up resulting in turning. The more you tilt the board the more it will try to turn.



Important Safety Information:

All precautionary measures should be taken before, during, and after riding the unit. Wearing full body protection including a helmet is highly recommended. See the owners manual for the full list of highly recommended personal protection equipment.

- 1) It is **highly recommended** that the rider establish themselves on the unit at lower speeds before moving up to high or full speed.
- 2) **TEST** the safety tether's function before each ride.
- 3) **TEST** all functions at lower speed before using a higher speed. (Ex. throttle, brakes, steering)
- 4) If the tracks become jammed, try to put the vehicle in reverse to clear the blockage. **DON'T** continue to apply forward power to dislodge the track as this can over heat and/or **DAMAGE** the control system

USE the parking brake when mounting and dismounting the vehicle. This ensures no accidental runaways occur.

- 6) **Never** switch into reverse while the vehicle is moving forward. This can cause personal injury and damage to the drive system.

